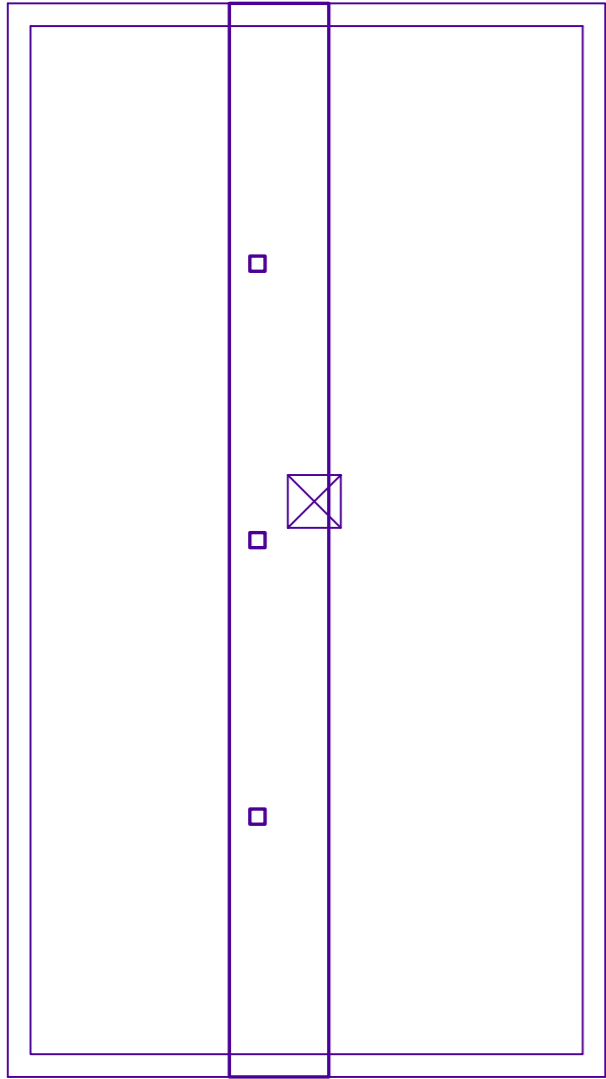
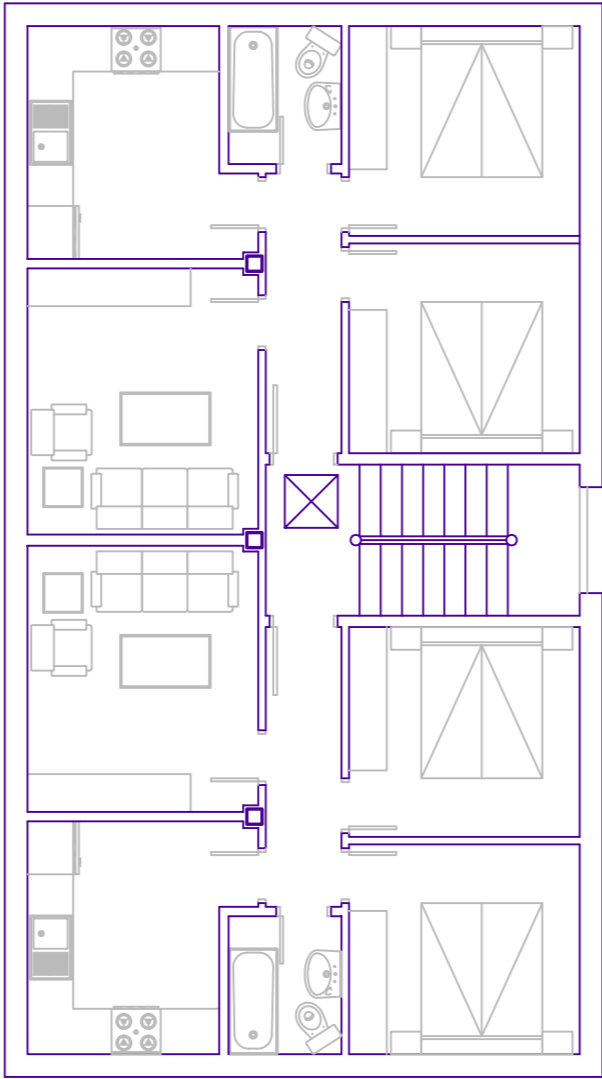


P. Bajocubierta



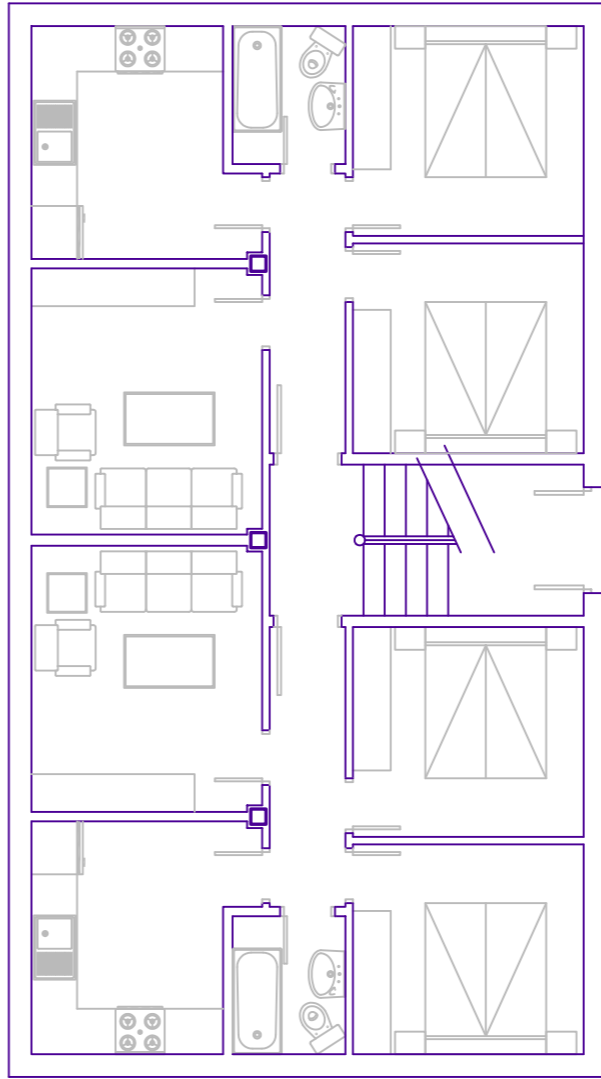
sup. construida computable = 11,50 m2.

P. Primera



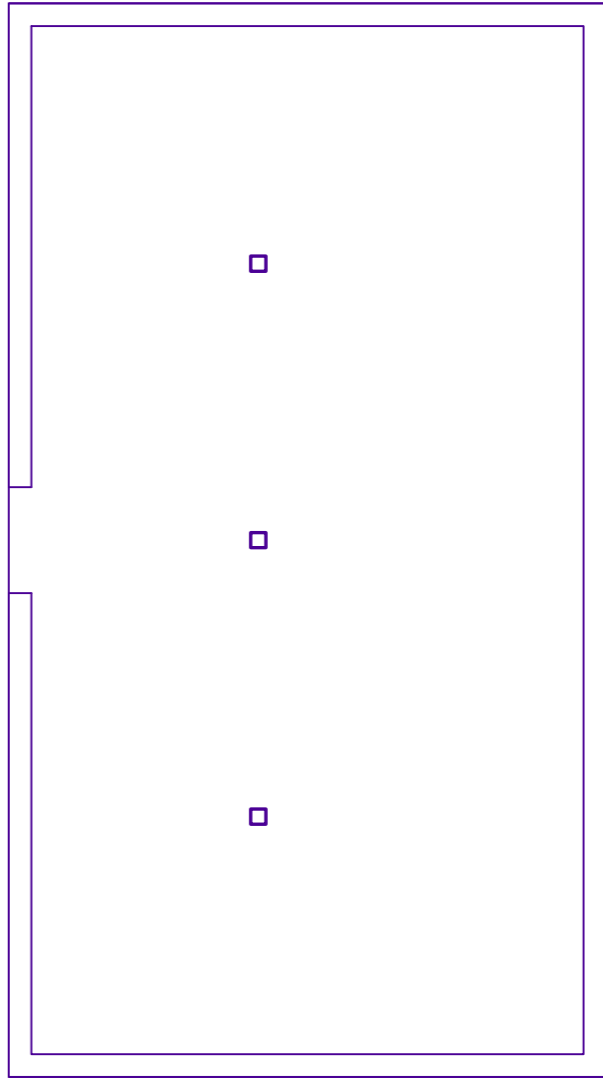
sup. construida = 112,18 m2.

P. Baja



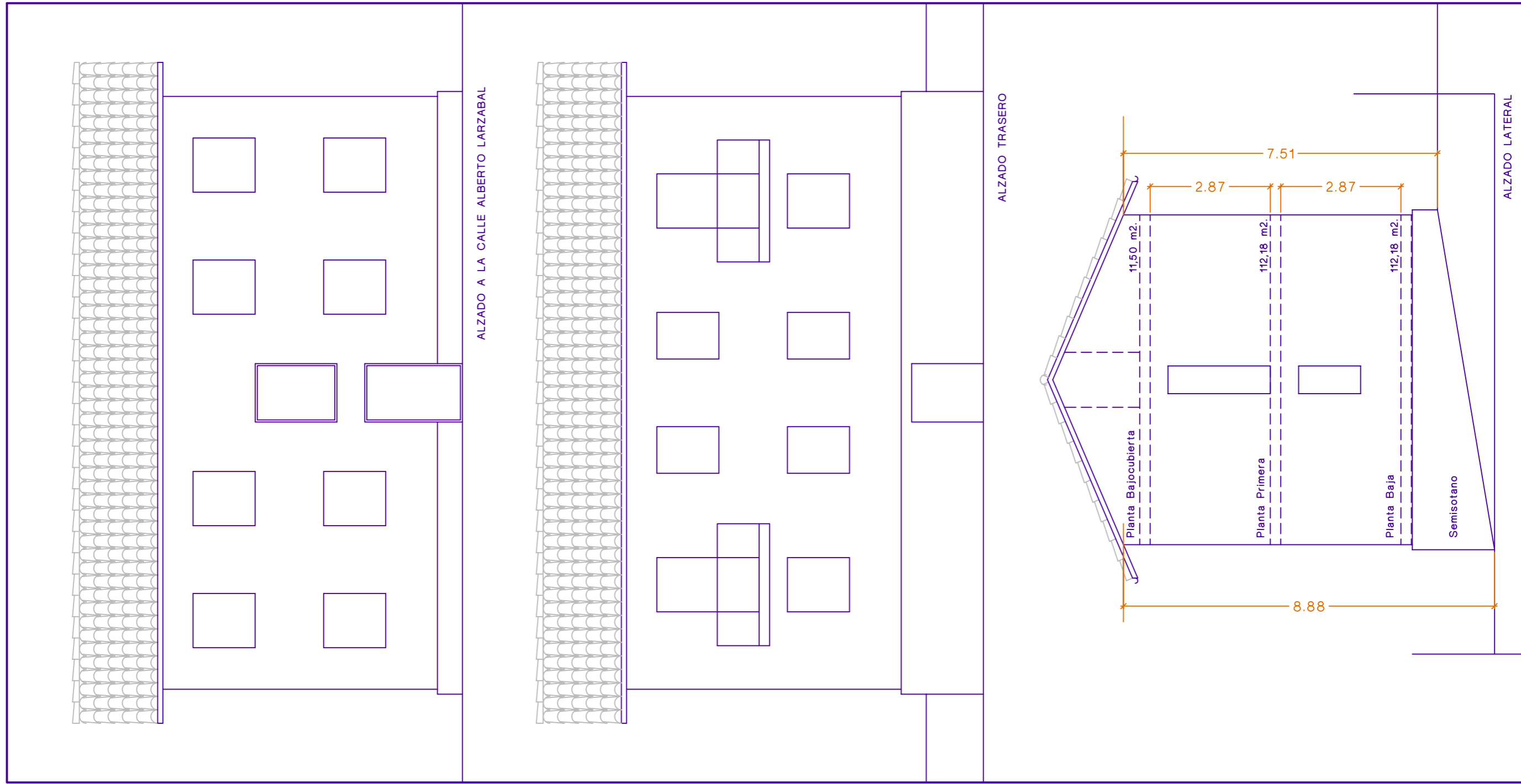
sup. construida = 112,18 m2.

P. Semisotano



sup. construida Total = 235,86 m2.

sup. computable segun criterio del P.G del levantamiento del estado actual : 235,86 m2.



ESCALA 1:100