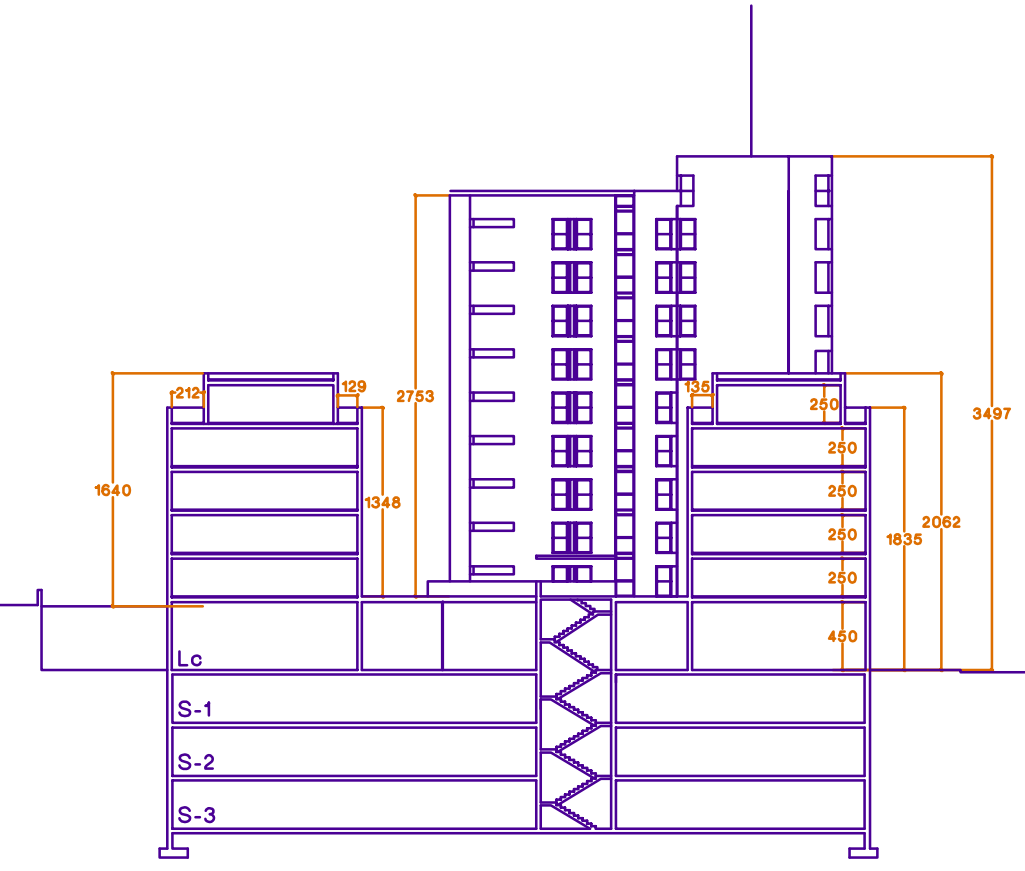
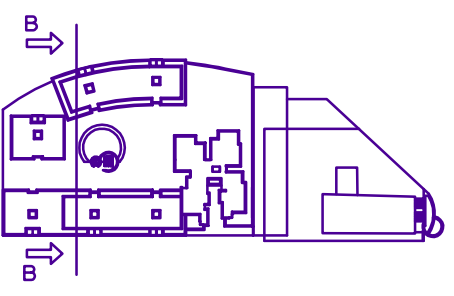
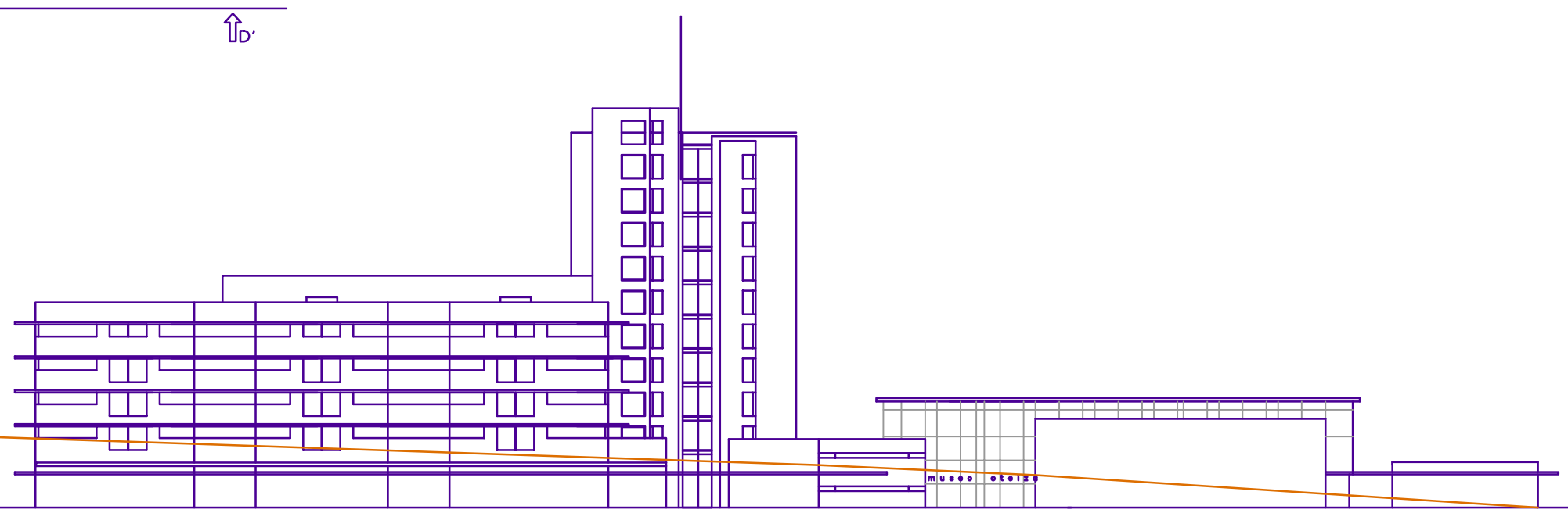
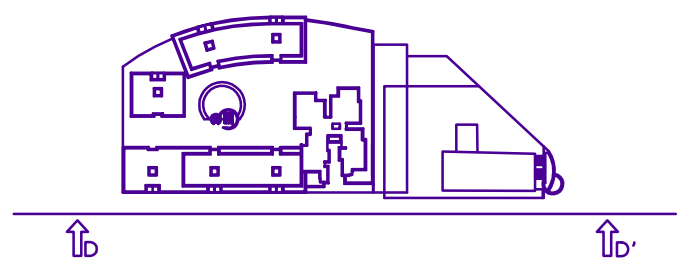


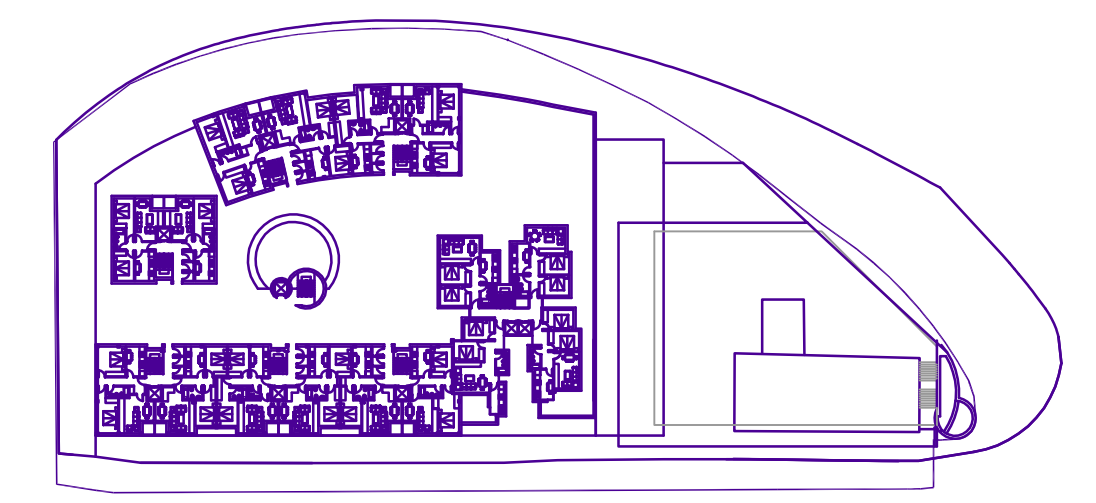
E.1:500



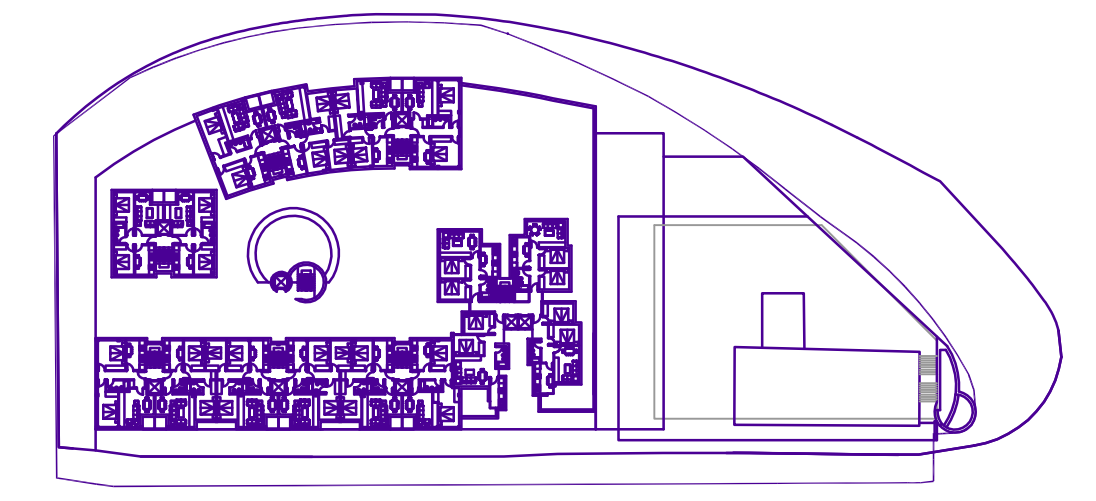
E.1:500



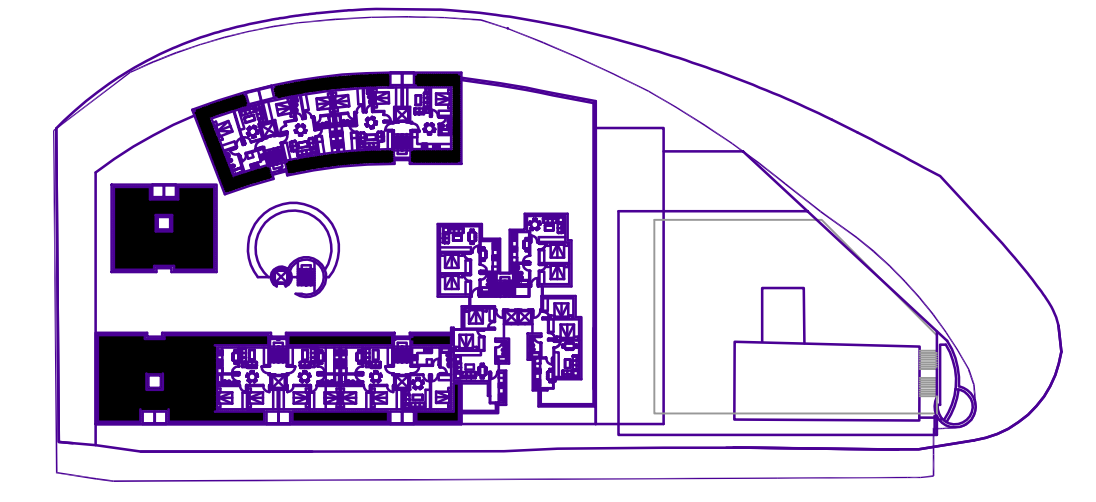
E.1:500



E.1:1.000



E.1:1.000



E.1:1.000

REFUNDIDO DE LA MODIFICACION DEL PLAN ESPECIAL DE REFORMA INTERIOR AREA RECONDO-AVD. IPARRALDE

PERFILES Y SECCIONES DEL VIARIO Y LA EDIFICACION

P-8

E 1:500

IRUN JULIO 2008

PROMUEVEN:	1.-CLAFI S.A.	2.-FAMILIA POLO
3.-D. ENRIQUE TRIAS CARRERAS	4.-D. JOSEBA-IMANOL ELOSUA	5.-ELOSUA-BASTERRECHEA Y OTROS
ARQUITECTO: ALBERTO POMBO RECONDO	ARQUITECTO COLABORADOR: JOSE E. URIBE AZAOLA	ABOGADA: MONICA ZARATE AGUIRRE